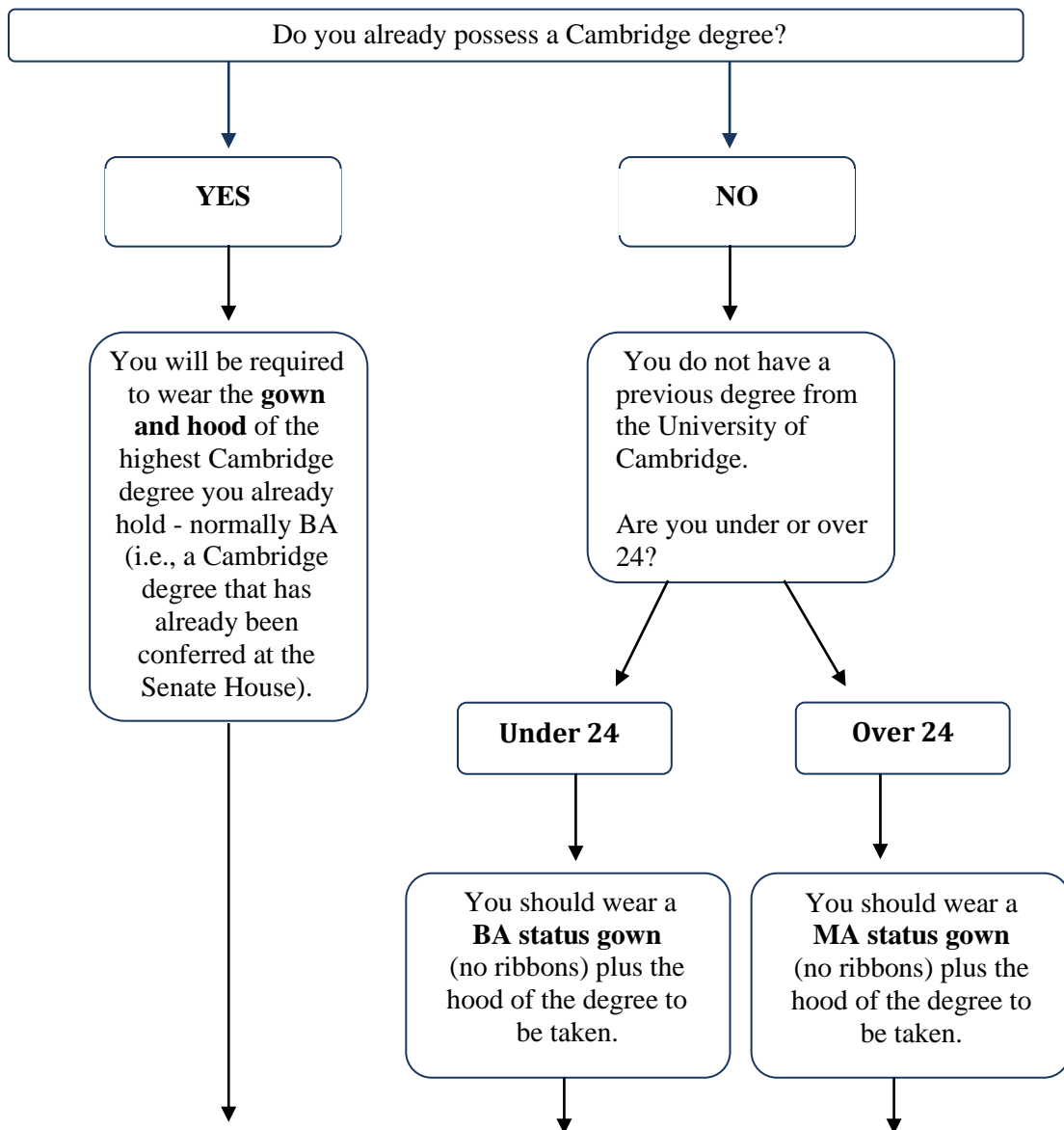


**HOMERTON COLLEGE**  
**DRESS CODE FOR POSTGRADUATES' CONGREGATIONS**



**Under no circumstances should a gown of another Institution/College be worn**

See this webpage: [www.cambridgesu.co.uk/aboutus/services/gowns/gownguide](http://www.cambridgesu.co.uk/aboutus/services/gowns/gownguide)

**THE HOOD**

BA.:	black cloth and white fur; the fur used is artificial.
MA.:	black corded silk lined with white silk.
M.Phil.:	black cloth lined with blue silk.
MBA.:	black cloth lined with dark green silk.
M.Ed.:	black corded silk lined with light blue silk.
MST.:	black corded silk lined with yellow silk.
PhD.:	black corded silk lined with scarlet cloth.
M.A.St.:	black cloth lined with gold silk.
M.Res.:	black cloth lined with dark plum red silk.
M.Eng.:	black cloth lined with bronze silk.
M.Sci.:	black corded silk lined with pink silk shot with light blue.

The Tutorial staff will show you how to wear your hood on the day, A convenient button on the shirt or blouse may be used as an anchor, with the hood worn as a 'choker' or it may be worn forming a V, attached by means of safety pins. **Please bring 2 medium/small safety pins with you on the day.** It is preferable that cotton or polyester/cotton blouses are worn since safety pins can damage delicate fabrics.

### DRESS CODE (OPTION ONE)

- A **plain** black suit (or VERY dark grey, or VERY dark blue). The suit **MUST** be dark enough not to contrast obviously with a black gown. A black dinner jacket and trousers are permitted.
- A plain, long-sleeved, collared, white shirt. If you wear a dress shirt, studs should be unobtrusive.
- Plain belts may be worn, with no fancy buckles.
- Formal black shoes.
  - Sandals, boots, trainers, open-toed shoes and slingbacks (heeled or flat) are not permitted.
  - Shoes with large accessories such as bows, or diamante are not permitted.
- Unpatterned black, or very dark greys socks. Unpatterned black or nearly black hosiery.
- White bowtie and bands **must** be worn; these can be hired from your gown outfitter.

### DRESS CODE (OPTION TWO)

- **One** of the following: a **plain black** (or VERY dark grey or VERY dark blue)
  - skirt, with or without a jacket.
  - trouser suit with a jacket.
  - or a plain black long-sleeved dress, with or without a jacket.These **MUST** be dark enough not to contrast obviously with a black gown.
- A plain, long-sleeved, white shirt or blouse, with long or three-quarter length sleeves and a high neck (unless a long-sleeved dress is worn). Buttons should be unnoticeable.
- A skirt or dress must be at least knee length but may be full length. It should be sufficiently full for you to be able to kneel. A black long-sleeved cardigan may be worn.
- Plain belts only may be worn at the waist, with no fancy buckles.
- Formal black shoes.
  - Sandals, boots, trainers, open-toed shoes and slingbacks (heeled or flat) are not permitted.
  - Shoes with large accessories such as bows, or diamante are not permitted.
- Unpatterned black, or very dark greys socks. Unpatterned black or nearly black hosiery.
- White bowtie and bands may be worn if desired, *but only with a stiff-collared white shirt.*

### **National, Clerical and Military Dress**

National dress and service uniforms are permitted only if approved by the College Praelectors.

A black **cassock** may be substituted for a dark suit, skirt, or dress in either dress option, but it must be worn with *either* a white bow tie and bands *or* a clerical collar and bands.

### ***Additional Notes:***

Handbags and umbrellas must not be brought into the Senate House (can be left with your guests).

The square cap, or 'mortarboard', is optional for graduands but should NOT be worn in the Senate House.

The only items of jewellery permitted are wedding and engagement rings; necklaces should be worn under the dress. Earrings must be small studs only - the dangling type must not be worn.

***Praelectors of each Cambridge College are responsible for the dress code of their own College. Please note that there may be slight differences from other Colleges.***

# Homerton College

## Dress Code for Graduation Ceremony Senate House



Dark suits

Black trousers worn with a black jacket.

Knee length skirts

Black long-sleeved knee length dresses

Long sleeved white blouses to be worn with skirts.

Black or near black tights

Black socks to be worn with trousers.

Formal black shoes. Sandals, boots, trainers, open toed shoes, and slingbacks (heeled or flat) are not permitted.

Shoes with large accessories such as bows, or diamante are not permitted.

**Praelectors of each Cambridge College are responsible for the Dress Code of their own College. Please note there may be slight differences from other colleges.**

**Black socks long enough to cover ankles must be worn and no coloured nail varnish or nail art work.**



**RECOMMENDED GOWN OUTFITTERS**

Ede and Ravenscroft, 70 - 72 Trumpington Street, Cambridge

You can hire online at [www.gownhire.co.uk](http://www.gownhire.co.uk) or call 01223 861854

Ryder and Amies 22 King's Parade, Cambridge

Telephone: 01223 350371

Graduands should note that they are responsible for ordering their own gown and hood.

It is also your responsibility to collect these prior to the rehearsal and return these to your supplier.

For further information on Academic Dress please see:

<http://www.admin.cam.ac.uk/students/studentregistry/current/newstud/graduation/dress.html>